

Spacereservation for the banner



12345678

A

B

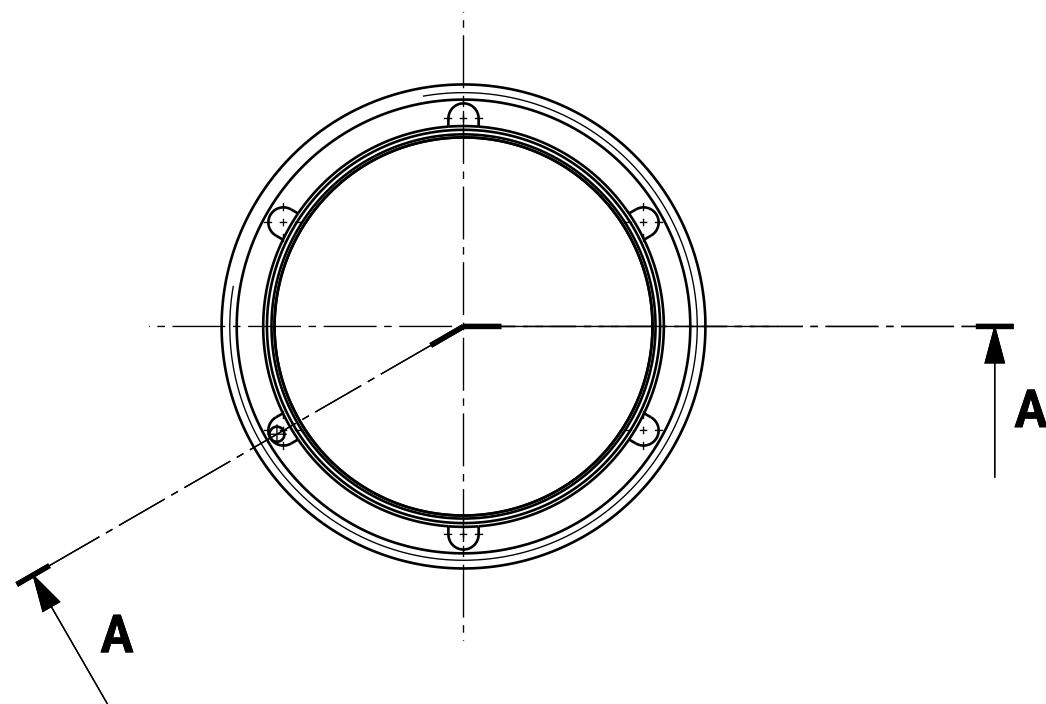
C

D

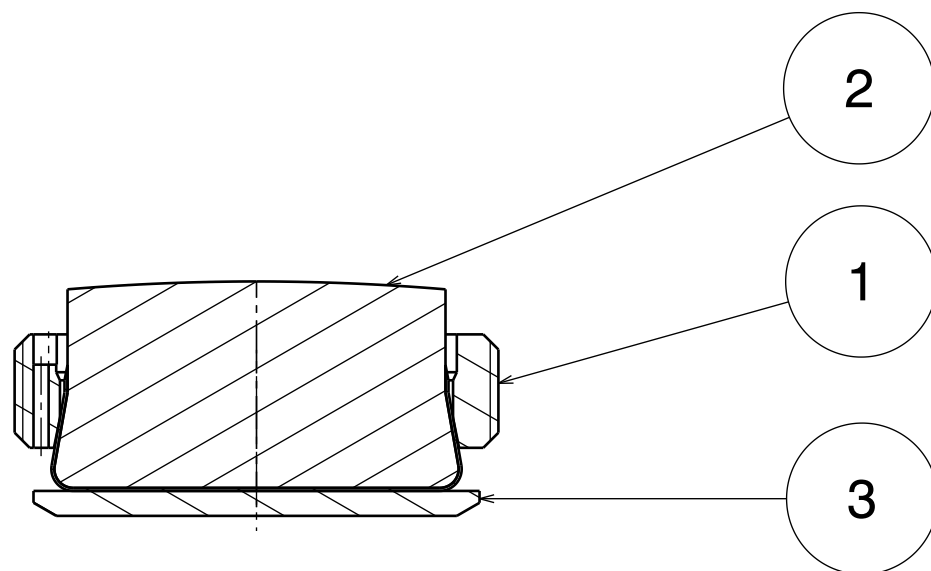
E

F

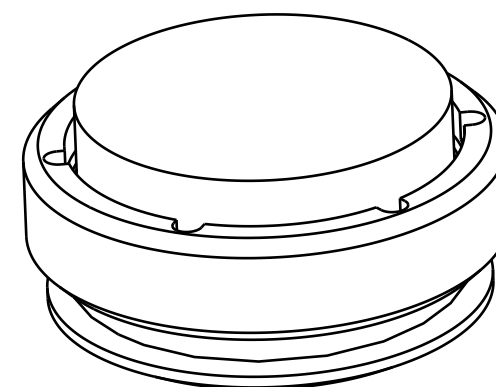
Spacereservation for the banner



FRONT VIEW



SECTION VIEW A-A




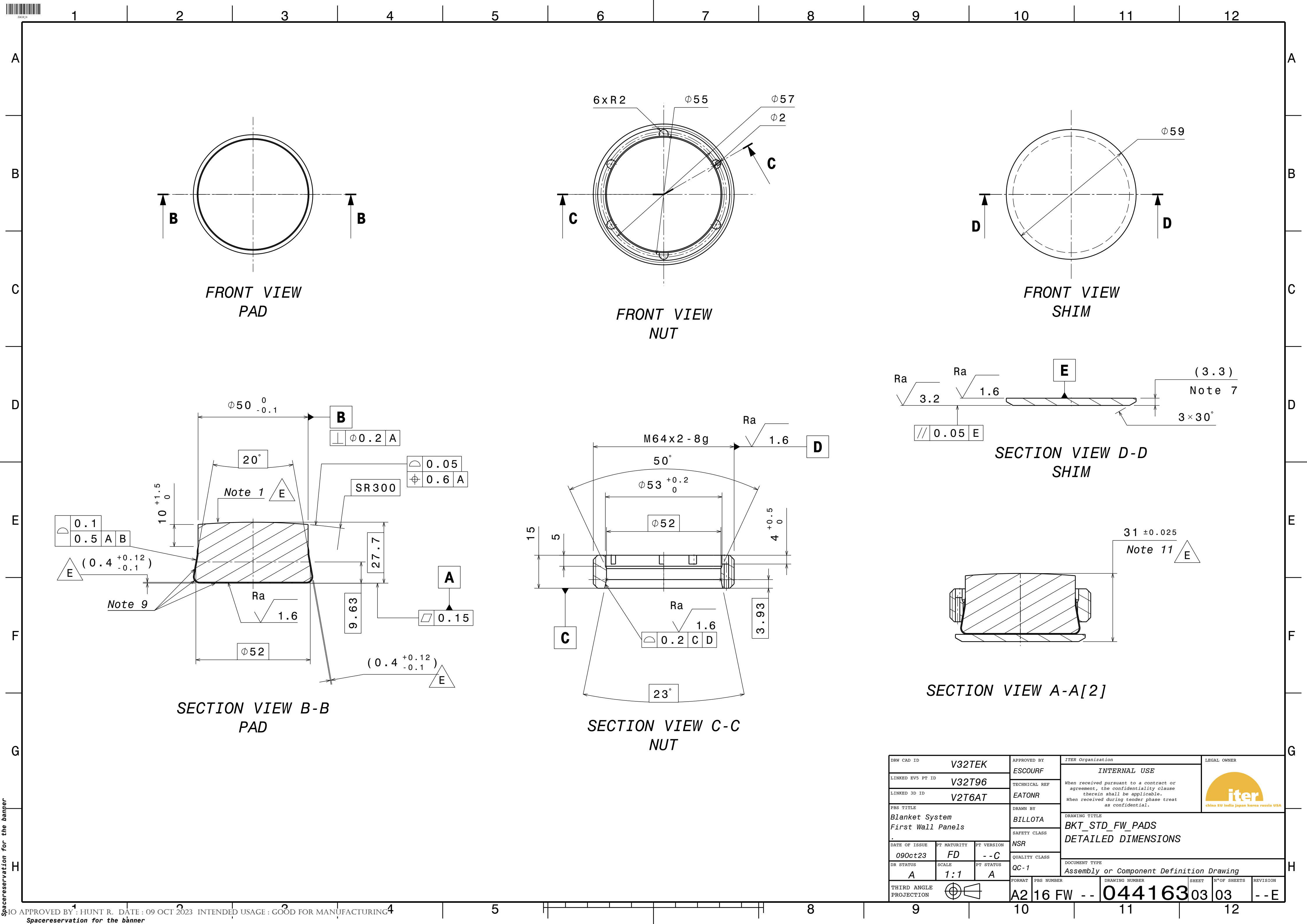
ISOMETRIC VIEW

- Note 1: LFC as per IDM_YBP47S. Roughness needed to ensure the functionality of the low friction coating (which typically requires a thickness higher than 10x the roughness), as demonstrated experimentally
- Note 2: all dimensions could be found in the 3D CAD model as referenced in the title block.
- Note 3: component to be compliant with Annex B requirements.
- Note 4: break sharp edges.
- Note 5: surface finish is at $Ra < 6.3$ unless specified.
- Note 6: dimensions & tolerances given after coating.
- Note 7: Shims will vary depending on manufacturing of each individual FW. Final dimension can be between 3mm minimum and 6mm maximum
- Note 8: Each Pad shall be delivered to the IO site with its corresponding shim that repeat the tolerances requested.
- Note 9: EIC shall be as per IDM_D25QF6. Thickness of Alumina coating (Al₂O₃) as a part of EIC shall be in range of 0.25-0.45mm. Protect EIC during LFC deposition.
- Note 10: General tolerances ISO-2768-cL unless specified.
- Note 11: 31mm height is a nominal value. Height will vary depending on Customization value which will be provided by IO.


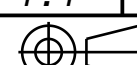


Item No.	Part Number	Revision	Material	Quantity	Weight
1	BKT_FW_STD_PAD-NUT#LXU9UQ	--F	Al bronze (C63200)	1	0.111kg
2	BKT_FW_STD_PAD#DN2PBV	--H	Al bronze (C63200)	1	0.428kg
3	BKT_FW_STD_PAD-SHIM#3DKU2E	--B	316L	1	0.069kg

DRW CAD ID			V32TEK		APPROVED BY		ITER Organization			LEGAL OWNER				
LINKED EV5 PT ID			V32T96		ESCOURF		INTERNAL USE When received pursuant to a contract or agreement, the confidentiality clause therein shall be applicable. When received during tender phase treat as confidential.							
LINKED 3D ID			V2T6AT		TECHNICAL REF									
PBS TITLE					EATONR		DRAWN BY		DRAWING TITLE BKT_STD_FW_PADS BOM					
Blanket System First Wall Panels .					BILLOTA		SAFETY CLASS							
DATE OF ISSUE		PT MATURITY		PT VERSION		NSR		DOCUMENT TYPE Assembly or Component Definition Drawing						
09Oct23		FD		- -C		QUALITY CLASS								
DR STATUS		SCALE		PT STATUS		QC-1								
A		1:1		A										
THIRD ANGLE PROJECTION					FORMAT		PBS NUMBER			DRAWING NUMBER		SHEET	N°OF SHEETS	REVISION
					A3		16 FW - -			044163		02	03	- - E



Spacereservation for the banner

DRW CAD ID V32TEK			APPROVED BY ESCOURF		ITER Organization INTERNAL USE			LEGAL OWNER  china EU india japan korea russia USA			
LINKED EV5 PT ID V32T96			TECHNICAL REF EATONR		When received pursuant to a contract or agreement, the confidentiality clause therein shall be applicable. When received during tender phase treat as confidential.			BKT_STD_FW_PADS DETAILED DIMENSIONS			
LINKED 3D ID V2T6AT			DRAWN BY BILLOTA								
PBS TITLE Blanket System First Wall Panels			SAFETY CLASS NSR		QUALITY CLASS QC-1			DOCUMENT TYPE Assembly or Component Definition Drawing			
DATE OF ISSUE 09Oct23	PT MATURITY FD	PT VERSION --C	DR STATUS A	SCALE 1:1	PT STATUS A						
THIRD ANGLE PROJECTION 			FORMAT A2		PBS NUMBER 16 FW --		DRAWING NUMBER 044163		SHEET 03	N*OF SHEETS 03	REVISION --E